



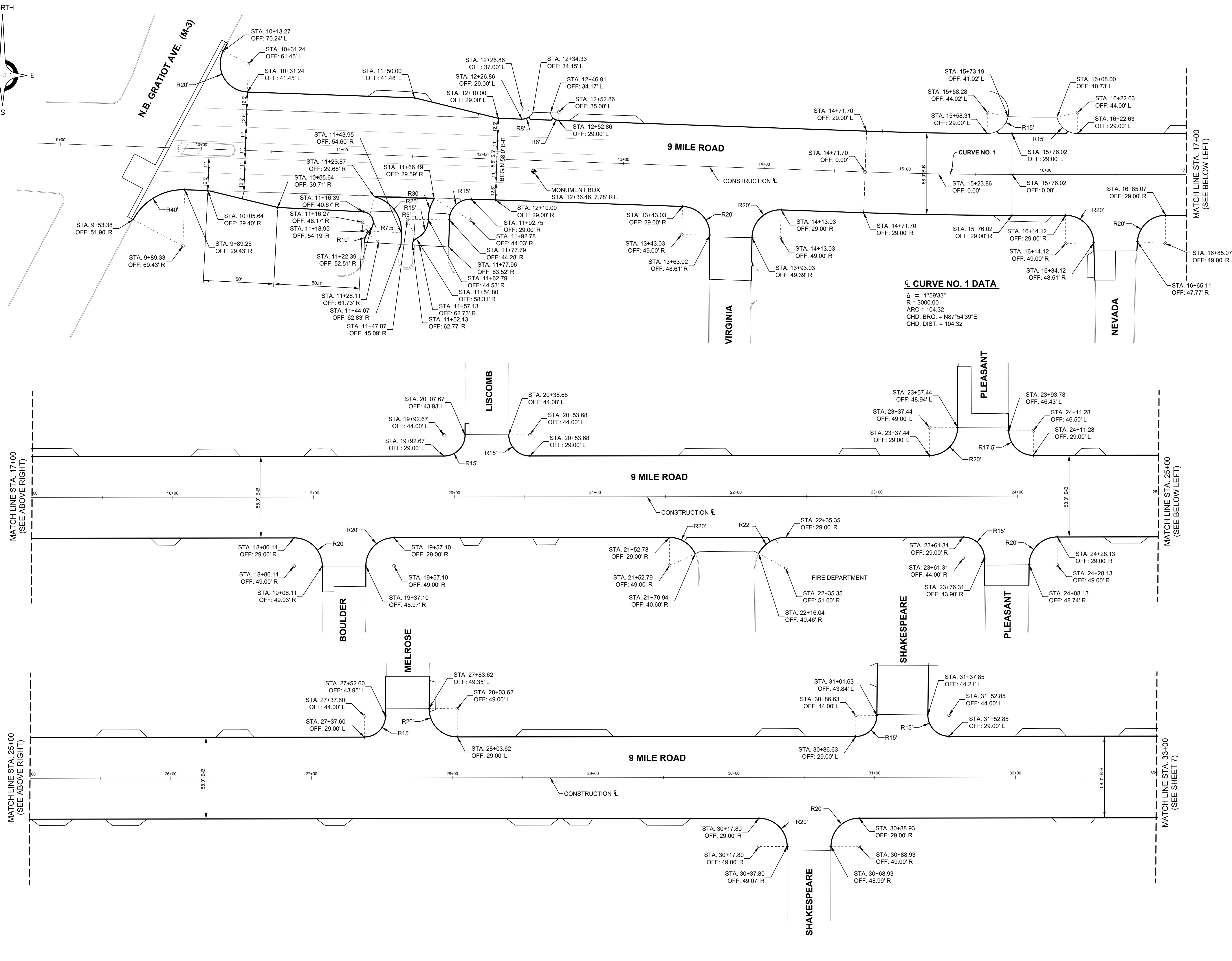
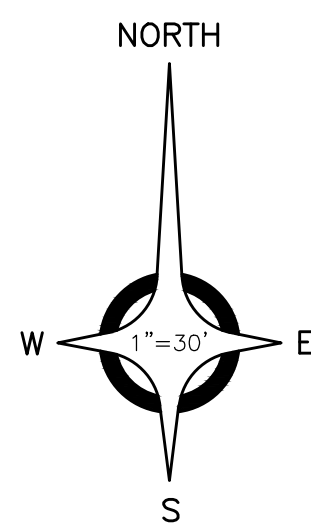
ANDERSON, ECKSTEIN AND WESTRICK, INC.

CIVIL ENGINEERS SURVEYORS ARCHITECTS

51301 Schoenherr Road Phone 586 726 1234
Shelby Township Michigan 48315 Fax 586 726 8780

www.aewinc.com

ENGINEERING STRONG COMMUNITIES



¢ CURVE NO. 1 DATA
Δ = 1°59'33"
R = 3000.00
ARC = 104.32
CHD. BRG. = N87°54'39"E
CHD. DIST. = 104.32

DATE	SUBMITTALS/REVISIONS

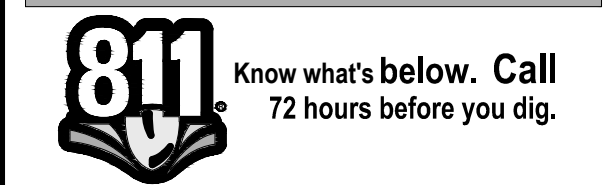
9 MILE ROAD PAVEMENT RECONSTRUCTION
N.B. GRATIOT (M-3) TO TUSCANY AVE.

ALIGNMENT SHEET
N.B. GRATIOT AVE. (M-3) TO STA. 33+00

CLIENT: CITY OF EASTPOINTE

PRELIMINARY	CONSTRUCTION	RECORD
<input type="checkbox"/>	<input type="checkbox"/>	<input type="checkbox"/>
DRAWN BY: MJS	CHECKED BY: RRR	DATE: MAY 2023

SCALE: 1" = 30'



UTILITY INFORMATION, AS SHOWN, INDICATES APPROXIMATE LOCATIONS AND TYPES OF EXISTING FACILITIES ONLY, AS DISCLOSED BY RECORDS PROVIDED TO THIS FIRM FROM THE VARIOUS UTILITY COMPANIES. NO GUARANTEE IS GIVEN OR IMPLIED AS TO THE COMPLETENESS OR ACCURACY THEREOF.

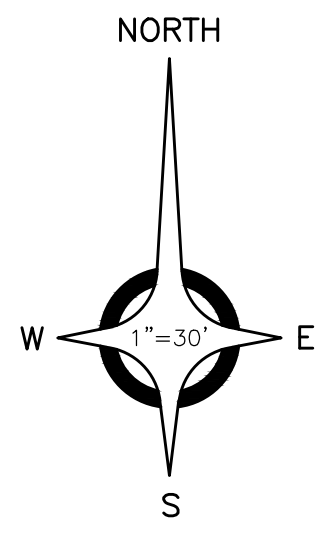
PRIOR TO CONSTRUCTION, ALL LOCATIONS AND DEPTHS OF EXISTING OVERHEAD AND UNDERGROUND UTILITIES (IN CONFLICT WITH THE CONSTRUCTION OF THESE PROPOSED IMPROVEMENTS) SHALL BE VERIFIED IN THE FIELD. DURING THE CONSTRUCTION, THE CONTRACTOR SHALL PROTECT AND SUPPORT ALL UTILITIES THAT ARE ENCOUNTERED. (ALL COSTS FOR UTILITY LOCATION VERIFICATION, SUPPORT AND PROTECTION SHALL BE INCLUDED IN THE PROPOSED PAY ITEM CONFLICTING WITH THAT UTILITY).

DURING CONSTRUCTION, THE CONTRACTOR SHALL USE EXTREME CAUTION WHEN OPERATING NEAR ANY AND ALL OVERHEAD AND / OR BURIED UTILITIES.

PROJECT NO. 0145-0645

M:\01450645\0645\DRAWING\PLANS\TEMP-ROAD DETAIL\ALG_ALIGNMENT.DWG
06_Alg_1-11/9/2024 4:10:08 PM

SHEET NO.



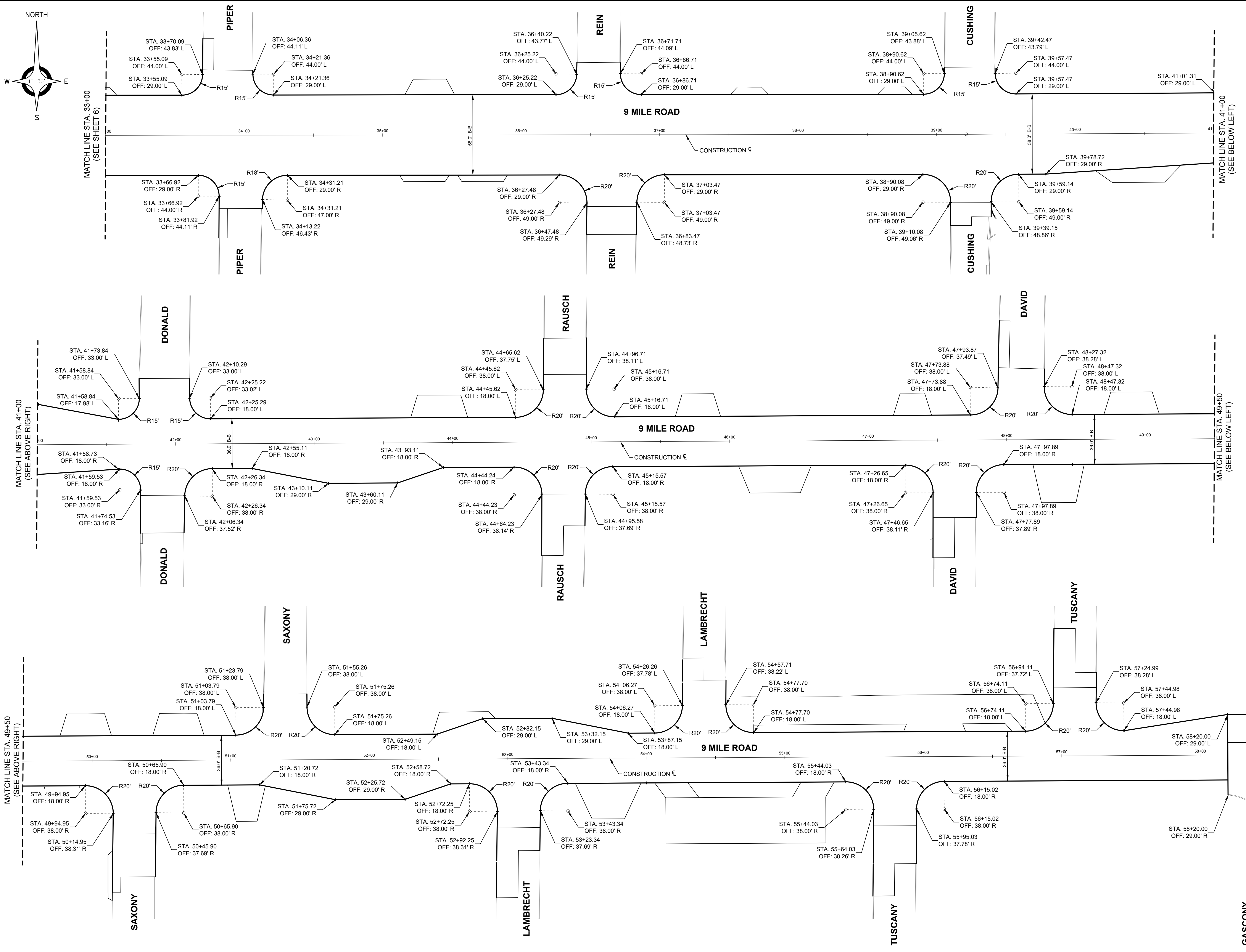
ANDERSON, ECKSTEIN AND WESTRICK, INC.

CIVIL ENGINEERS SURVEYORS ARCHITECTS

51301 Schoenherr Road Phone 586 726 1234
Shelby Township Michigan 48315 Fax 586 726 8780

www.aewinc.com

ENGINEERING STRONG COMMUNITIES



DATE	SUBMITTALS/REVISIONS

DATE	SUBMITTALS/REVISIONS

9 MILE ROAD PAVEMENT RECONSTRUCTION
N.B. GRATIOT (M-3) TO TUSCANY AVE.

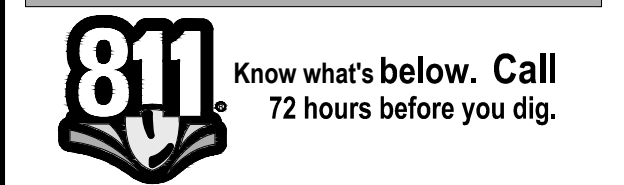
ALIGNMENT SHEET
STA. 33+00 TO STA. 57+88.37

CLIENT: CITY OF EASTPOINTE

PRELIMINARY	CONSTRUCTION	RECORD
<input type="checkbox"/>	<input checked="" type="checkbox"/>	<input type="checkbox"/>

DRAWN BY:	CHECKED BY:	DATE:
MJS	RRK	MAY 2023

SCALE: 1" = 30'



UTILITY INFORMATION, AS SHOWN, INDICATES APPROXIMATE LOCATIONS AND TYPES OF EXISTING UTILITIES ONLY. AS DISCLOSED BY RECORDS PROVIDED TO THIS FIRM FROM THE VARIOUS UTILITY COMPANIES. NO GUARANTEE IS GIVEN OR IMPLIED AS TO THE COMPLETENESS OR ACCURACY THEREOF.

PRIOR TO CONSTRUCTION, ALL LOCATIONS AND DEPTHS OF EXISTING OVERHEAD AND UNDERGROUND UTILITIES (IN CONFLICT WITH THE CONSTRUCTION OF THESE PROPOSED IMPROVEMENTS) SHALL BE VERIFIED IN THE FIELD. DURING THE CONSTRUCTION, THE CONTRACTOR SHALL PROTECT AND SUPPORT ALL UTILITIES THAT ARE ENCOUNTERED. (ALL COSTS FOR UTILITY LOCATION VERIFICATION, SUPPORT AND PROTECTION SHALL BE INCLUDED IN THE PROPOSED PAY ITEM CONFLICTING WITH THAT UTILITY).

DURING CONSTRUCTION, THE CONTRACTOR SHALL USE EXTREME CAUTION WHEN OPERATING NEAR ANY AND ALL OVERHEAD AND / OR BURIED UTILITIES.

PROJECT NO. 0145-0645

M:\01450645\DWG\CONV\PAVING PLAN\TEMP-ROAD DETAIL\A2_AKRON.DWG
07_Algp.2-11/9/2024 4:12:20 PM

SHEET NO.



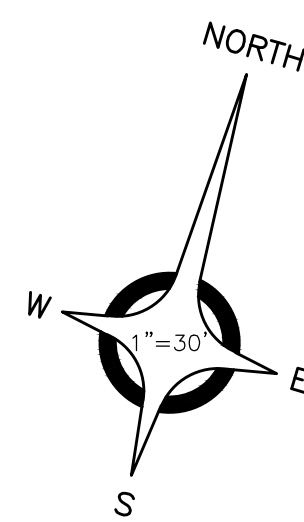
ANDERSON, ECKSTEIN AND WESTRICK, INC.

CIVIL ENGINEERS SURVEYORS ARCHITECTS

51301 Schoenherr Road Phone 586 726 1234
Shelby Township Michigan 48315 Fax 586 726 8780

www.aewinc.com

ENGINEERING STRONG COMMUNITIES



BENCHMARK NO. 5047
FOUND MAG NAIL SOUTH
FACE UTILITY POLE WITH
LITE, NORTH SIDE 9 MILE @
#17207, 115± EAST OF
RAUSCH
ELEVATION: 602.84 (NAVD 88)

45+52.3 PARKING BLOCKS 1 40.5'
45+52.3 3" STEEL POST 40.5'

45+93.2 3" STEEL POST 40.5'
45+93.2 STORM MH 18.2'
46+03.6 UP W/DRIFT 32.5'

47+48.6 UP W/DRIFT 32.7'
47+53.8 PARKING BLOCKS 1 40.5'
47+53.8 3" STEEL POST 40.5'

47+59.1 STORM MH 2.7'

47+86.2 2" DIA BUSH 0.5'
47+86.2 3" DIA BUSH 0.5'
47+86.2 4" DIA BUSH 0.5'
47+86.2 6" DIA BUSH 0.5'
47+86.2 8" DIA BUSH 0.5'
47+86.2 10" DIA BUSH 0.5'

47+91.3 CONCRETE MAN 48.3'

47+97.1 OW 15.4'

48+94.4 SERVICEHOFF 43.4'

49+22.1 UP W/DRIFT 32.7'

49+46.1 50M-POST MOUNT 50.6'

49+82.4 6" DEBRIS 4.48'

49+85 50M-POST MOUNT 42.8'

50+87.9 STORM CB 9.7'

50+99.8 UP W/DRIFT 32.7'

50+99.8 3" STEEL POST 40.5'

51+15.4 6" DIA BUSH 0.5'

51+15.4 8" DIA BUSH 0.5'

51+15.4 10" DIA BUSH 0.5'

51+21.9 50M-POST MOUNT 45.7'

51+25.6 UP W/DRIFT 32.7'

51+25.6 3" STEEL POST 40.5'

51+25.6 4" DIA BUSH 0.5'

51+25.6 6" DIA BUSH 0.5'

51+25.6 8" DIA BUSH 0.5'

51+25.6 10" DIA BUSH 0.5'

51+25.6 12" DIA BUSH 0.5'

51+25.6 14" DIA BUSH 0.5'

51+25.6 16" DIA BUSH 0.5'

51+25.6 18" DIA BUSH 0.5'

51+25.6 20" DIA BUSH 0.5'

51+25.6 22" DIA BUSH 0.5'

51+25.6 24" DIA BUSH 0.5'

51+25.6 26" DIA BUSH 0.5'

51+25.6 28" DIA BUSH 0.5'

51+25.6 30" DIA BUSH 0.5'

51+25.6 32" DIA BUSH 0.5'

51+25.6 34" DIA BUSH 0.5'

51+25.6 36" DIA BUSH 0.5'

51+25.6 38" DIA BUSH 0.5'

51+25.6 40" DIA BUSH 0.5'

51+25.6 42" DIA BUSH 0.5'

51+25.6 44" DIA BUSH 0.5'

51+25.6 46" DIA BUSH 0.5'

51+25.6 48" DIA BUSH 0.5'

51+25.6 50" DIA BUSH 0.5'

51+25.6 52" DIA BUSH 0.5'

51+25.6 54" DIA BUSH 0.5'

51+25.6 56" DIA BUSH 0.5'

51+25.6 58" DIA BUSH 0.5'

51+25.6 60" DIA BUSH 0.5'

51+25.6 62" DIA BUSH 0.5'

51+25.6 64" DIA BUSH 0.5'

51+25.6 66" DIA BUSH 0.5'

51+25.6 68" DIA BUSH 0.5'

51+25.6 70" DIA BUSH 0.5'

51+25.6 72" DIA BUSH 0.5'

51+25.6 74" DIA BUSH 0.5'

51+25.6 76" DIA BUSH 0.5'

51+25.6 78" DIA BUSH 0.5'

51+25.6 80" DIA BUSH 0.5'

51+25.6 82" DIA BUSH 0.5'

51+25.6 84" DIA BUSH 0.5'

51+25.6 86" DIA BUSH 0.5'

51+25.6 88" DIA BUSH 0.5'

51+25.6 90" DIA BUSH 0.5'

51+25.6 92" DIA BUSH 0.5'

51+25.6 94" DIA BUSH 0.5'

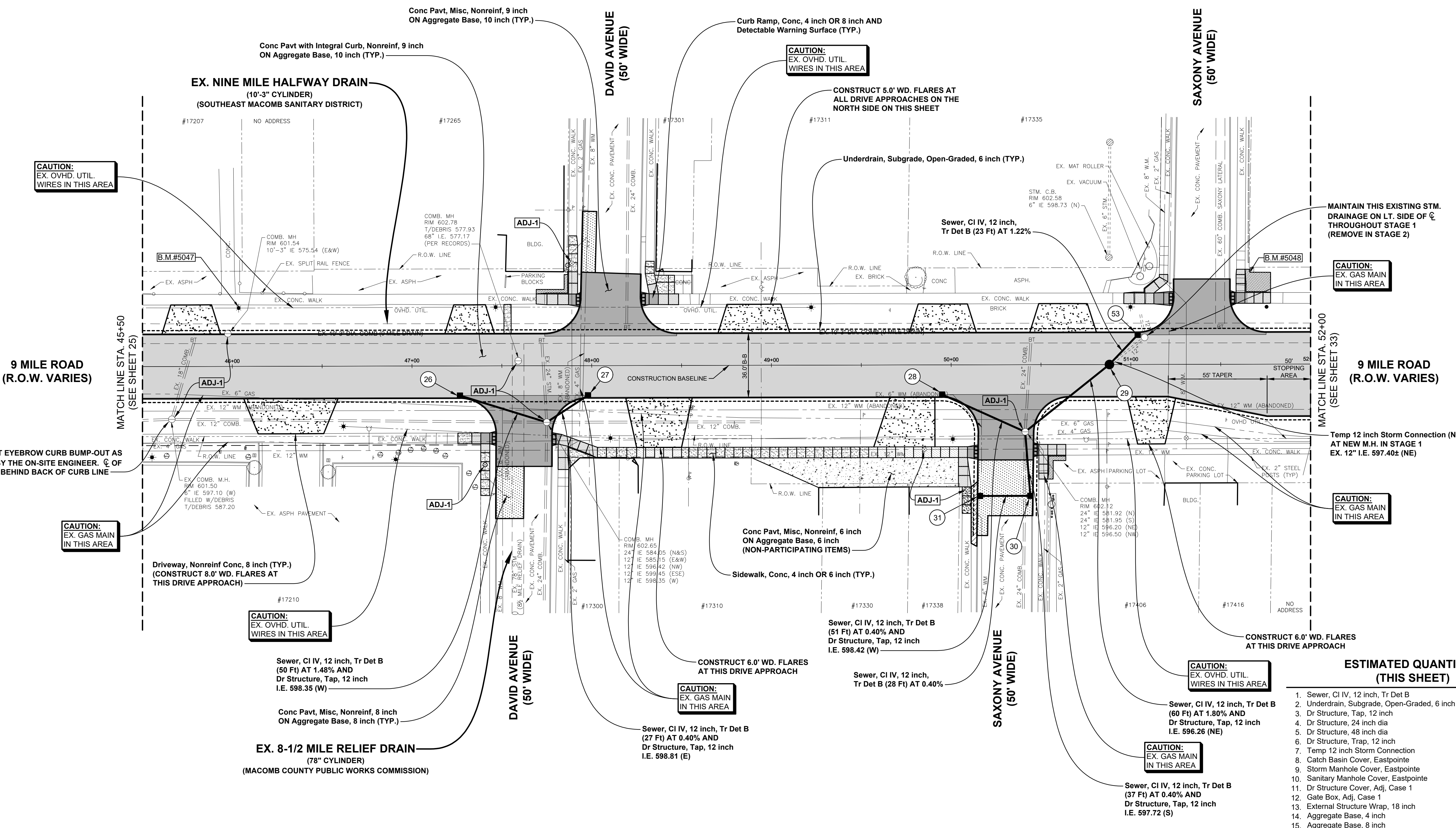
51+25.6 96" DIA BUSH 0.5'

51+25.6 98" DIA BUSH 0.5'

51+25.6 100" DIA BUSH 0.5'

53) Dr Structure, 48 inch dia
WITH 2' SUMP
STA. 51+03.8, 16.5' RT.
RIM 602.12
12" IE 597.62 (SW)
6" IE 599.12 (E&W)

NOTE:
SUPPORT & PROTECT ALL
UTILITY POLES WITHIN THE
INFLUENCE OF CONSTRUCTION



CAUTION:
EX. OVHD. UTIL.
WIRES IN THIS AREA

CAUTION:
EX. OVHD. UTIL.
WIRES IN THIS AREA

CAUTION:
EX. GAS MAIN
IN THIS AREA

CAUTION:
EX. GAS MAIN
IN THIS AREA

CAUTION:
EX. OVHD. UTIL.
WIRES IN THIS AREA

CAUTION:
EX. GAS MAIN
IN THIS AREA

CAUTION:
EX. OVHD. UTIL.
WIRES IN THIS AREA

CAUTION:
EX. GAS MAIN
IN THIS AREA

26) Dr Structure, 48 inch dia
WITH 2' SUMP AND
Dr Structure Trap, 12 inch
STA. 47+26.7, 16.5' RT.
RIM 602.59
12" IE 599.09 (E)
6" IE 599.59 (E&W)

27) Dr Structure, 48 inch dia
WITH 2' SUMP AND
Dr Structure Trap, 12 inch
STA. 47+97.9, 16.5' RT.
RIM 602.92
12" IE 598.92 (W)
6" IE 599.92 (E&W)

28) Dr Structure, 48 inch dia
WITH 2' SUMP AND
Dr Structure Trap, 12 inch
STA. 49+94.8, 16.5' RT.
RIM 602.62
12" IE 598.62 (E)
6" IE 599.62 (E&W)

31) Dr Structure, 24 inch dia
(NO SUMP)
STA. 50+15.9, 73.0' RT.
RIM 601.58
12" IE 597.58 (E)
6" IE 598.58 (N&S)

30) Dr Structure, 48 inch dia
WITH 2' SUMP AND
Dr Structure Trap, 12 inch (N)
STA. 50+43.9, 73.0' RT.
RIM 601.54
12" IE 597.47 (W)
12" IE 597.37 (N)
6" IE 598.54 (N&S)

29) Dr Structure, 48 inch dia
(NO SUMP)
STA. 55+88.0, 0.0' RT.
RIM 602.62
TEMP. 12" CONN. IE 597.40± (NE)
12" IE 597.34 (SW&NE)

ESTIMATED QUANTITIES
(THIS SHEET)

Table with 2 columns: Item description and Quantity. Includes items like Sewer, CI IV, 12 inch, Tr Det B (276 Ft), Underdrain, Subgrade, Open-Graded, 6 inch (1,390 Ft), etc.

ESTIMATED NON-PARTICIPATING QUANTITIES
(THIS SHEET)

Table with 2 columns: Item description and Quantity. Includes items like Aggregate Base, 6 inch (176 Syd), Conc Pavt, Misc, Nonreinf, 6 inch (176 Syd).

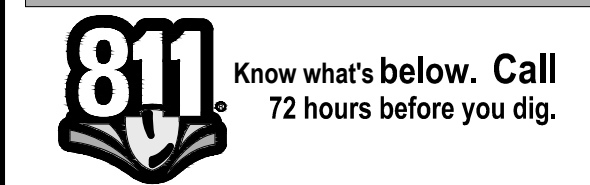
Table with 2 columns: DATE and SUBMITTALS/REVISIONS.

9 MILE ROAD
PAVEMENT
RECONSTRUCTION
N.B. GRATIOT (M-3) TO TUSCANY AVE.

CONSTRUCTION
PLAN
STA. 45+50 TO STA. 52+00

CITY OF EASTPOINTE

Table with 3 columns: DRAWN BY, CHECKED BY, DATE. Includes MJS, RRR, MAY 2023.



UTILITY INFORMATION, AS SHOWN, INDICATES APPROXIMATE
LOCATIONS AND TYPES OF EXISTING FACILITIES ONLY. AS
DISCLOSED BY RECORDS PROVIDED TO THIS FIRM FROM THE
VARIOUS UTILITY COMPANIES. NO GUARANTEE IS GIVEN OR
IMPLIED AS TO THE COMPLETENESS OR ACCURACY THEREOF.

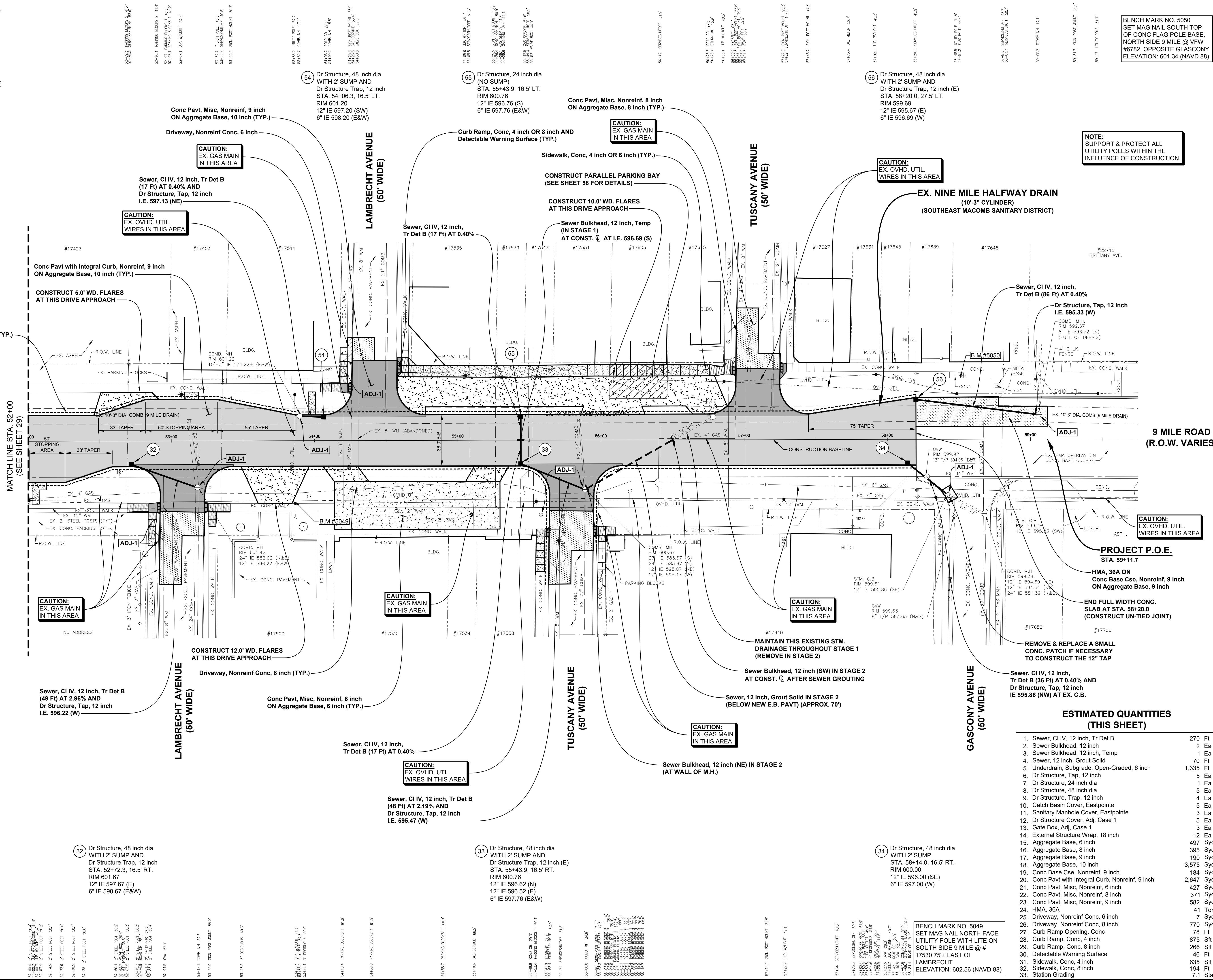
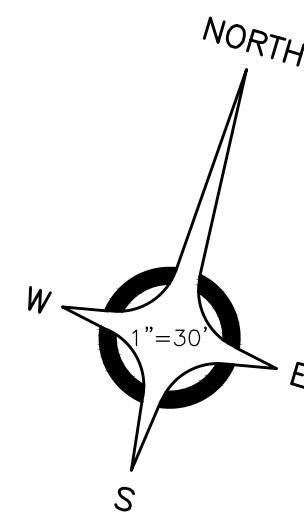
PRIOR TO CONSTRUCTION, ALL LOCATIONS AND DEPTHS OF
EXISTING OVERHEAD AND UNDERGROUND UTILITIES (IN
CONFLICT WITH THE CONSTRUCTION OF THESE PROPOSED
IMPROVEMENTS) SHALL BE VERIFIED IN THE FIELD.
DURING THE CONSTRUCTION, THE CONTRACTOR SHALL
PROTECT AND SUPPORT ALL UTILITIES THAT ARE
ENCOUNTERED. (ALL COSTS FOR UTILITY LOCATION
VERIFICATION, SUPPORT AND PROTECTION SHALL BE
INCLUDED IN THE PROPOSED PAY ITEM CONFLICTING WITH
THAT UTILITY).

DURING CONSTRUCTION, THE CONTRACTOR SHALL USE
EXTREME CAUTION WHEN OPERATING NEAR ANY AND ALL
OVERHEAD AND / OR BURIED UTILITIES.

PROJECT NO. 0145-0645

M:\0145\0645\0645\PAVING PLAN\TEMP - ROAD DETAIL\31_CONJ.DWG
28_Const 6-123\2024 4:05:25 PM

SHEET NO.



BENCH MARK NO. 5050
SET MAG NAIL SOUTH TOP
OF CONC FLAG POLE BASE,
NORTH SIDE 9 MILE @ VW
#6782, OPPOSITE GLASCONY
ELEVATION: 601.34 (NAVD 88)

NOTE:
SUPPORT & PROTECT ALL
UTILITY POLES WITHIN THE
INFLUENCE OF CONSTRUCTION

CAUTION:
EX. OVHD. UTIL.
WIRES IN THIS AREA

CAUTION:
EX. GAS MAIN
IN THIS AREA

CAUTION:
EX. GAS MAIN
IN THIS AREA

CAUTION:
EX. OVHD. UTIL.
WIRES IN THIS AREA

CAUTION:
EX. OVHD. UTIL.
WIRES IN THIS AREA

CAUTION:
EX. GAS MAIN
IN THIS AREA

CAUTION:
EX. GAS MAIN
IN THIS AREA

CAUTION:
EX. GAS MAIN
IN THIS AREA

CAUTION:
EX. OVHD. UTIL.
WIRES IN THIS AREA

CAUTION:
EX. GAS MAIN
IN THIS AREA

**ESTIMATED QUANTITIES
(THIS SHEET)**

1. Sewer, CI IV, 12 inch, Tr Det B	270 Ft
2. Sewer Bulkhead, 12 inch	2 Ea
3. Sewer Bulkhead, 12 inch, Temp	1 Ea
4. Sewer, 12 inch, Grout Solid	70 Ft
5. Underdrain, Subgrade, Open-Graded, 6 inch	1,335 Ft
6. Dr Structure, Tap, 12 inch	5 Ea
7. Dr Structure, 24 inch dia	1 Ea
8. Dr Structure, 48 inch dia	5 Ea
9. Dr Structure, Trap, 12 inch	4 Ea
10. Catch Basin Cover, Eastpointe	5 Ea
11. Sanitary Manhole Cover, Eastpointe	3 Ea
12. Dr Structure Cover, Adj. Case 1	5 Ea
13. Gate Box, Adj. Case 1	3 Ea
14. External Structure Wrap, 18 inch	12 Ea
15. Aggregate Base, 6 inch	497 Syd
16. Aggregate Base, 8 inch	395 Syd
17. Aggregate Base, 9 inch	190 Syd
18. Aggregate Base, 10 inch	3,575 Syd
19. Conc Base Cse, Nonreinf, 9 inch	184 Syd
20. Conc Pavt with Integral Curb, Nonreinf, 9 inch	2,647 Syd
21. Conc Pavt, Misc, Nonreinf, 6 inch	427 Syd
22. Conc Pavt, Misc, Nonreinf, 8 inch	371 Syd
23. Conc Pavt, Misc, Nonreinf, 9 inch	582 Syd
24. HMA, 36A	41 Ton
25. Driveway, Nonreinf Conc, 6 inch	7 Syd
26. Driveway, Nonreinf Conc, 8 inch	770 Syd
27. Curb Ramp Opening, Conc	78 Ft
28. Curb Ramp, Conc, 4 inch	875 Sft
29. Curb Ramp, Conc, 8 inch	266 Sft
30. Detectable Warning Surface	46 Ft
31. Sidewalk, Conc, 4 inch	635 Sft
32. Sidewalk, Conc, 8 inch	194 Ft
33. Station Grading	7.1 Sta

BENCH MARK NO. 5049
SET MAG NAIL NORTH FACE
UTILITY POLE WITH LITE ON
SOUTH SIDE 9 MILE @ #
17530 75' S EAST OF
LAMBRECHT
ELEVATION: 602.56 (NAVD 88)

ANDERSON, ECKSTEIN AND WESTRICK, INC.
CIVIL ENGINEERS SURVEYORS ARCHITECTS
51301 Schoenherr Road Phone 586 726 1234
Shelby Township Fax 586 726 8780
Michigan 48315
www.aewinc.com
ENGINEERING STRONG COMMUNITIES

DATE	SUBMITTALS/REVISIONS
PROJECT NAME:	9 MILE ROAD PAVEMENT RECONSTRUCTION N.B. GRATIOT (M-3) TO TUSCANY AVE.
SHEET TITLE:	CONSTRUCTION PLAN STA. 52+00 TO GASCONY
CIENT:	CITY OF EASTPOINTE

CONSTRUCTION PLAN
STA. 52+00 TO GASCONY

LEGEND:
 PRELIMINARY
 CONSTRUCTION
 RECORD

DRAWN BY: MJS
CHECKED BY: RRR
DATE: MAY 2023

SCALE: 1" = 30'

0 15 30 60

811 Know what's below. Call 72 hours before you dig.

UTILITY INFORMATION, AS SHOWN, INDICATES APPROXIMATE LOCATIONS AND TYPES OF EXISTING FACILITIES ONLY. AS DISCLOSED BY RECORDS PROVIDED TO THIS FIRM FROM THE VARIOUS UTILITY COMPANIES. NO GUARANTEE IS GIVEN OR IMPLIED AS TO THE COMPLETENESS OR ACCURACY THEREOF.

PRIOR TO CONSTRUCTION, ALL LOCATIONS AND DEPTHS OF EXISTING OVERHEAD AND UNDERGROUND UTILITIES (IN CONFLICT WITH THE CONSTRUCTION OF THESE PROPOSED IMPROVEMENTS) SHALL BE VERIFIED IN THE FIELD. DURING THE CONSTRUCTION, THE CONTRACTOR SHALL PROTECT AND SUPPORT ALL UTILITIES THAT ARE ENCOUNTERED. (ALL COSTS FOR UTILITY LOCATION VERIFICATION, SUPPORT AND PROTECTION SHALL BE INCLUDED IN THE PROPOSED PAY ITEM CONFLICTING WITH THAT UTILITY).

DURING CONSTRUCTION, THE CONTRACTOR SHALL USE EXTREME CAUTION WHEN OPERATING NEAR ANY AND ALL OVERHEAD AND / OR BURIED UTILITIES.

PROJECT NO. 0145-0645
M:\0145\0645\DWG\PAVING PLAN\TEMP - ROAD DET\033_CONJ.DWG
33_Conj_T-123\2024-04-30 14:34 PM
SHEET NO. 33

COPYRIGHT, 2022, ANDERSON, ECKSTEIN AND WESTRICK, INC.